



# HOTEL NEW OTANI SAGA

Welcome to Hotel New Otani Saga

*The New Otani*

**Hotel New Otani Saga**

1-2 Yokamachi, Saga, 840-0047  
TEL. (0952) 23-1111 (Rep)  
<https://www.kys-newotani.co.jp/saga>

▼Official Website



Hotel brochure  
is available  
for download.



*The New Otani*





## A city hotel that merges Saga's history with the modern world.

Hotel New Otani Saga was designed by Kisho Kurokawa, a leading Japanese architect, and it began its operation as a guest house and community center for "Wakakusu Kokutai" (National Sports Festival) that opened in Saga in 1976.

It's nestled in beautiful nature with lush greenery and charm of Saga Castle moat. We offer refined elegance and thoughtful hospitality to all our guests.



## Becoming the most beloved hotel with deep experience

Guests can choose from 102 guest rooms of various features, and they can enjoy restaurants with Japanese, Western, and Chinese cuisines, as well as a tea lounge and a beer terrace in summer. Large banquet rooms with a capacity of 400 guests and function rooms in various sizes are also available.

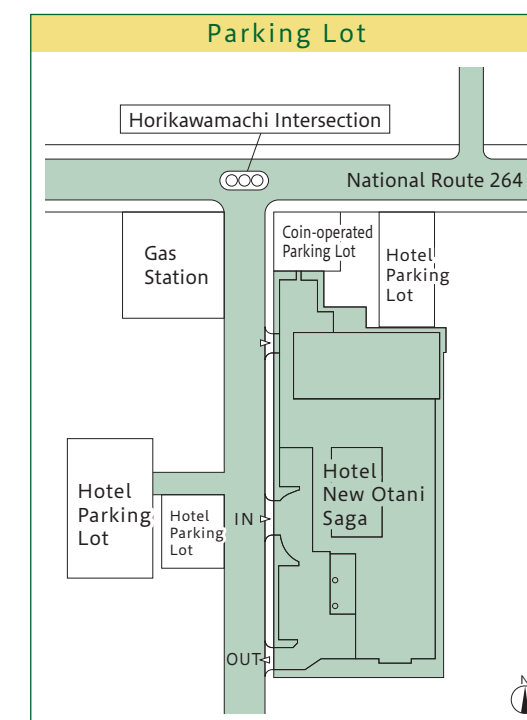
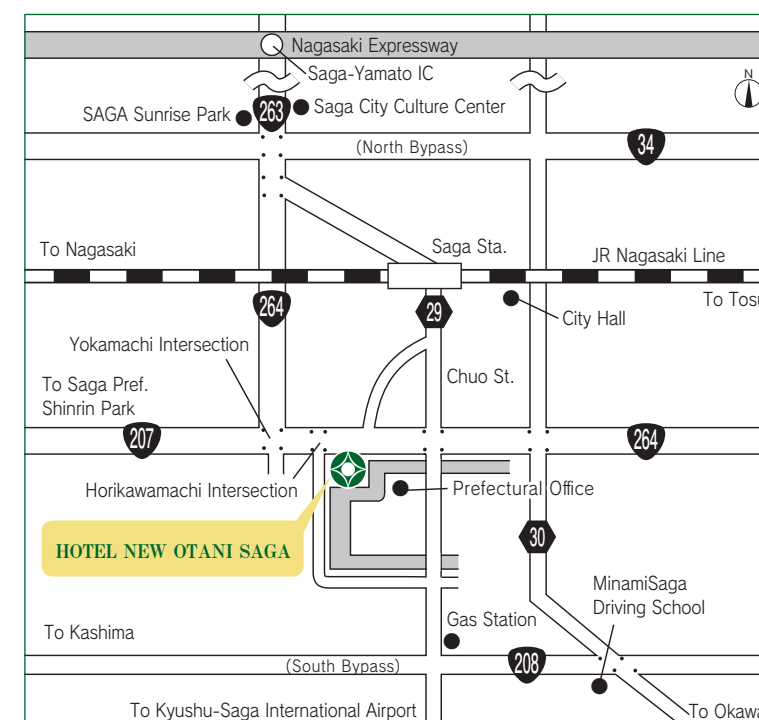
Ever since the opening of the hotel, we have welcomed VIPs from Japan and abroad, starting with the Showa Emperor and Empress as well as various imperial family members. While cherishing our rich experience and tradition, we aspire to enhance hospitality to accommodate various needs of our guests.



# Access & Overview

## Location & Overview

Approximately 5 minutes by car from Saga Station, our hotel is located in the central part of Saga City, a popular point that's used for sightseeing in Kyushu.



### Location

- Name: Hotel New Otani Saga
- Address: 1-2 Yokamachi, Saga, 840-0047
- TEL: (0952) 23-1111
- FAX: (0952) 23-1122

### Facility Overview

- Building structure: Steel framed reinforced concrete (8 floors above ground and 1 floor underground)
- Guest rooms: 102 rooms
- Elevator: Available (2 in guest building)
- Evacuation area: Parking lot across from the hotel
- Emergency exits: Available on every floor (2 on each floor)
- Security systems: Security network cameras, fire alarm systems, evacuation route maps, and flashlights available in each room
- Postal service: Available at the 1F front desk
- Others: Vending machine at the hotel sub entrance

### By Car

- From Saga-Yamato IC on Nagasaki Expressway..... Approx 20 min
- From Fukuoka Airport ..... Approx 50 min
- From Kyushu-Saga International Airport..... Approx 15 min
- From JR Hakata Station ..... Approx 60 min

### By Train (JR Limited Express)

- From JR Hakata Station to JR Saga Station ..... Approx 40 min

### Guest Rooms

- Room key: 1 for each room (not a card key) \*automatic lock system
- Telephone: Available in each room
- Air-conditioning: Fully equipped
- Bathroom/Toilet: Available in each room (not available in large public baths)
- TV: Available in each room (free)
- Refrigerator: Available in each room
- Hairdryer: Available in each room

### Local Emergency Services

- Emergency hospital: Fujikawa Hospital (7 min on foot from the hotel)
- Police station: Saga Prefectural Police Headquarters 1-16 Matsubara, Saga (5 min on foot from the hotel)
- Fire station: Saga Regional Fire Department 1-1-23 Matsubara, Saga (5 min on foot from the hotel)
- Health center: Central Saga Public Health and Welfare Office 1-20 Hatchonawatemachi, Saga (10 min by car from the hotel)

- JR Saga Station ..... Approx 5 min
- From SAGA Sunrise Park ..... Approx 10 min
- From Saga Pref. Shinrin Park ..... Approx 20 min

- ➔ Taxi ..... Approx 5 min
- ➔ Bus ..... Get on from Saga Station Bus Center Platform No. 4 or No. 5 and get off at "Tsujinodo"



## 1 SAGA Sunrise Park

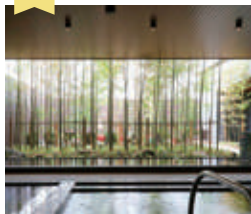


Its vast property includes one of the largest multi-purpose arenas in Kyushu and numerous sports facilities, such as various types of pools, training areas, tennis courts, and a horse riding arena.

TEL(0952)32-4070

Approx 10 min by car

## 2 Saga Hot Spring Komorebi



Popular as one of Japan's largest sauna facilities that offers bathing in 100% natural hot spring water. Wide range of relaxation services can be enjoyed, including carbonated spring, electric bath, and foot massage.

TEL(0952)32-4126

Approx 10 min by car

## 3 Saga Balloon Museum



The first museum in Japan with a permanent exhibit of hot air balloons. Visitors can have a fun learning experience in a super high-vision theater and through flight simulations.

TEL (0952) 40-7114

Approx 10 min on foot

### Check Out the Events!

#### Saga International Balloon Fiesta



Held at the beginning of November in Saga, it's one of the largest hot air balloon competitions in Asia. Balloonists from Japan and overseas gather to compete in the big sky.

TEL (0952) 29-9000

Approx 10 min by car

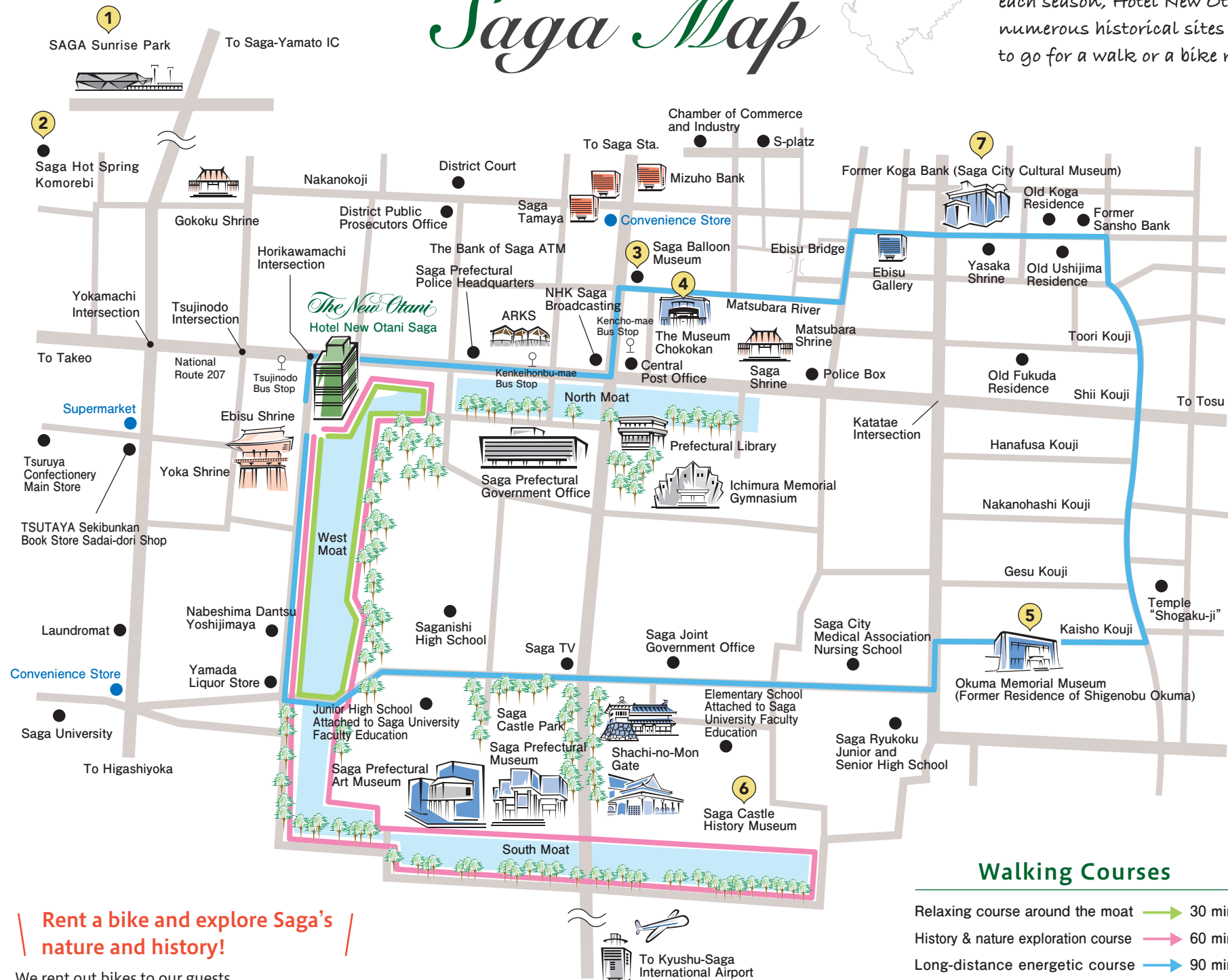
### Rent a bike and explore Saga's nature and history!

We rent out bikes to our guests.

Please make your request at the front desk.

[Price] 500 yen per day \*Number of bikes are limited.

# Saga Map



### Walking Courses

Relaxing course around the moat 30 min

History & nature exploration course 60 min

Long-distance energetic course 90 min

\*These courses are not specially designed trails for sightseeing. They are regular roads used for daily activities. Please be mindful of local residents and their activities.

Surrounded by a castle moat and lush greenery that changes with each season, Hotel New Otani Saga is located in an area with numerous historical sites and historic buildings. It's a perfect area to go for a walk or a bike ride in nature.

## 4 The Museum Chokokan



The first museum in Saga that was founded in 1927 by Naomitsu, the 12th head of the Nabeshima family. Artworks relating to Marquis Nabeshima Family, the former lord of Saga Domain, are displayed.

TEL (0952) 23-4200

Approx 10 min on foot

## 5 Okuma Memorial Museum



Historical records relating to Shigenobu Okuma who is known as an international politician are displayed, and his life is introduced through illustrations and videos.

TEL (0952) 23-2891

Approx 20 min on foot

## 6 Saga Castle History Museum



Parts of Saga Castle's Honmaru Goten from the last years of the Edo Period were faithfully reconstructed in the ruins of Saga Castle, a historic site designated by Saga Prefecture. It's one of the largest wooden reconstructions in Japan.

TEL (0952) 41-7550

Approx 15 min on foot

## 7 Saga City Cultural Museum



A collection of historical buildings that remains until the present day, such as the Former Koga Bank, Former Sansho Bank, and Old Ushijima Residence. Precious buildings with historic value are preserved for future generations.

TEL (0952) 22-6849

Approx 20 min on foot

## Places to Visit in Saga

### Saga City Mietsu Naval Dock Ruins



Saga Domain placed its naval investigation office here in 1857 and carried out its own naval education and training. It was registered as a World Heritage site in 2015.

TEL (0952) 34-9455

Approx 20 min by car

### Kanzaki City Forest Adventure Yoshinogari



"Eco-friendly outdoor park" that uses the forest as is. A wide age range of guests can have fun, choosing from three courses appropriate for their age and experience.

TEL090-2722-2753

Approx 40 min by car

### Tosu City Tosu Premium Outlets



Inspired by the cityscape of Southern California, it's one of the largest outlet malls in Kyushu with approximately 170 stores with popular brands from Japan and overseas.

TEL (0942) 87-7370

Approx 60 min by car

### Kanzaki City Yoshinogari Historical Park



98 structures from the Yayoi Period have been restored and its villages have been recreated. Visitors can experience the life of an ancient village.

TEL(0952)55-9333

Approx 30 min by car

### Kashima City Yutoku Inari Shrine



One of Japan's top three shrines dedicated to Inari along with Fushimi Inari Taisha and Kasama Inari Shrine. Uganomitama-no-okami, Omiyanome-no-okami, and Sarutahiko-no-okami are enshrined here, and visitors come to pray for good fortune and family prosperity.

TEL (0954) 62-2151

Approx 60 min by car

### Karatsu City Niji-no-Matsubara



A forest with about 1 million black pine trees that grow along the seaside of Karatsu Bay. With length of about 4.5 km and width of about 0.5 km, it's counted as one of Japan's three greatest pine groves.

Approx 90 min by car

Last edited: End of March 2023



# Guest Rooms

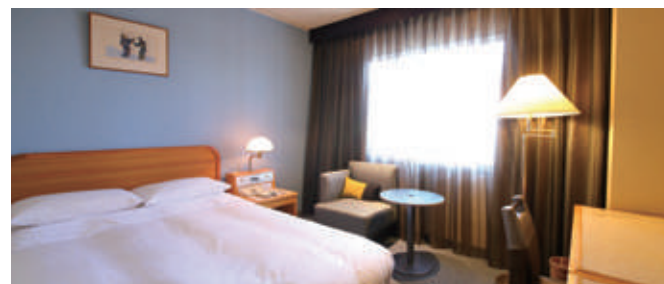
Guest Rooms <Total of 102 Rooms>

Info on  
Guest Rooms

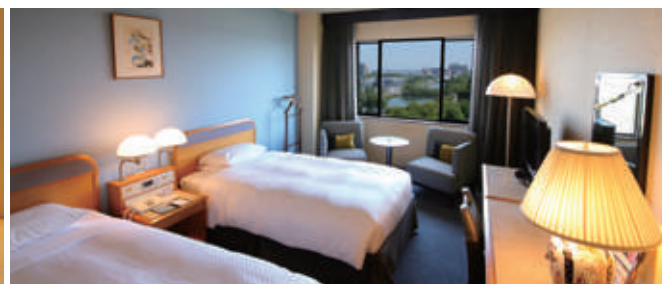


A room with a park view overlooks the nature of the Saga Castle moat.

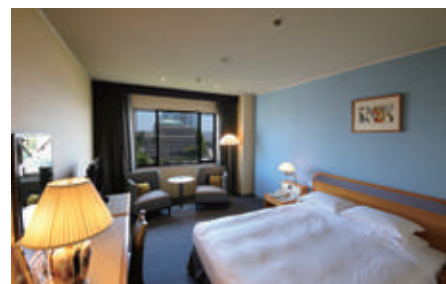
A room with a city view has a panorama of Western Saga's mountain ranges. Please select a room that fits your needs.



Semi-Double Room | Size: 18.3㎡ / Bed: 140 x 203 cm  
Standard: 15 rooms; Executive: 10 rooms



Twin Room | Size: 25.3㎡ / Bed: 110 x 205 cm  
Standard: 37 rooms; Executive: 18 rooms; Corner Room: 2 rooms



Double Room | Size: 22.3-25.3㎡  
Bed: 160 x 205 cm / 13 rooms



Japanese Style Room | Size: 31.1㎡ /  
Futon: 2-3 / 4 rooms



Connecting Room | 2 twin rooms connected with an internal  
door that can be used / 2 locations



Triple Room | Twin room with an extra bed or bed for a parent  
and a child to share. / 30 rooms



Ladies' Room | Can also be used as a Bride's Room.  
(For women only) | Size: 25.3㎡ / Bed: 110 x 205 cm / 1 room



Deluxe Twin Room | Size: 48.8㎡ / Bed: 130 x 205 cm / 1 room



Royal Suite Room | Size: 87.3㎡ / Bed: 140 x 205 cm / 1 room

- Check-in: 2:00 pm
- Check-out: 11:00 am
- Free Wi-Fi available in all rooms

## Business Support

- Highspeed internet (all guest rooms) | Free highspeed internet service is available in all guest rooms. It may not be accessible depending on the type of computer and OS.
- Wi-Fi (lobby) | Wireless internet service is available in the 1F hotel lobby.

Guest Room  
Service Info



# Restaurants & Bar

Restaurants & Bar

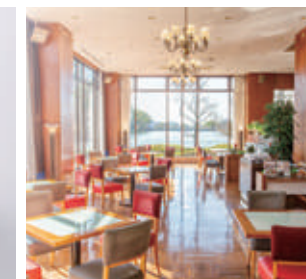
Info on  
Restaurants



Our restaurants & bar offer a superb blend of refined and elegant flavors as well as our signature service.

Fresh ingredients from each season are used to offer seasonal flavors that can only be enjoyed in Saga.

## 1F Tea & Cocktail Green Breeze



<Hours> 10:00 am - 10:00 pm  
<Capacity> 48 seats

## 2F Japanese Restaurant Kusu



<Hours> 11:30 am - 2:30 pm / 5:00 pm - 9:00 pm  
<Capacity> 20 seats <Private Room> 2 rooms (Shinonome 14 seats / Shiun 5 seats)

## 1F Restaurant Lotus



<Hours> 7:00 am - 10:00 am / 11:30 am - 2:30 pm / 5:30 pm - 9:30 pm  
<Capacity> 30 seats <Private Room> 1 room (Lotus Salon 12 seats)

## B1 Chinese Restaurant Taikan-en



<Hours> 11:30 am - 2:30 pm / 5:00 pm - 9:00 pm  
<Capacity> 30 seats <Private Room> 4 rooms (Ouka 16 seats / Ran 8 seats / Ume 6 seats / Momo 6 seats)

## 3F Summer Only! Beer Terrace Dinner Time

Cheers under a night sky full of stars!

An assortment of menus and drinks are offered that can only be enjoyed at a hotel.  
<Capacity> 80 seats



## Breakfast Example

Restaurant Lotus  
<Hours> 7:00 am - 10:00 am

A buffet with a collection of Japanese and Western cuisines using local ingredients from Saga. Meals can also be provided at function rooms for groups. Please feel free to ask for more info.



## ● Room Service <Hours> 7:00 am - 10:00 pm



\*Business hours may change and restaurants may close without notice. Latest information will be posted on the hotel website.



# Meeting & Banquet

Meetings & Banquets

Venues of various sizes and styles are available for meetings, banquets, and seminars.  
We can create the right space that's tailored to the purpose of your event.

Info on  
Banquet Rooms



Info on Banquets  
& Regulations

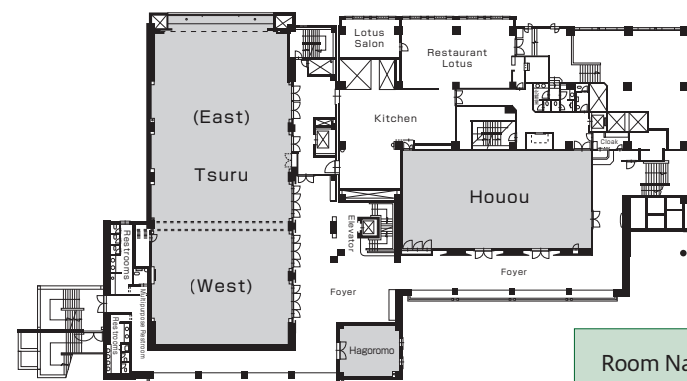


M2

■ Tsuru



■ Houou



■ Hagoromo



Room Name	Capacity (persons)				Area		W x L x H	
	Formal Dinner	Standing Buffet	Classroom Style	Theater Style	m <sup>2</sup>	Tsubo	m	
Tsuru	All	440	600	440	760	694	210	40.0 × 17.5 × 5.1
	East	240	300	220	400	430	130	25.0 × 17.5 × 5.1
	West	140	200	120	250	245	74	14.0 × 17.5 × 5.1
Houou	170	200	180	300	277	84		23.2 × 12.0 × 3.8
Hagoromo	10	—	—	—	46	14		6.2 × 7.5 × 2.3

3F

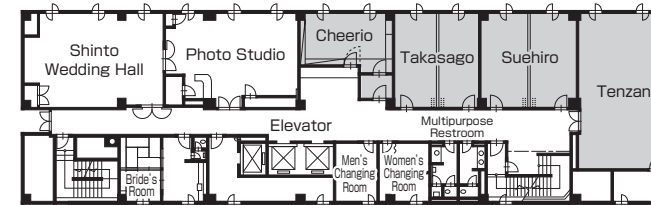
■ Tenzan



■ Suehiro / Takasago



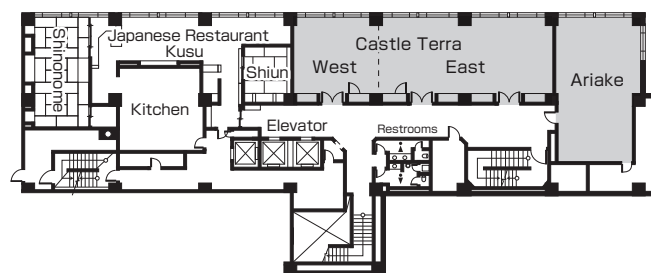
■ Cheerio



Room Name	Capacity (persons)				Area		W x L x H	
	Formal Dinner	Standing Buffet	Classroom Style	Theater Style	m <sup>2</sup>	Tsubo	m	
Tenzan	40	50	50	70	83	25		11.8 × 7.0 × 2.8
Suehiro	20	30	24	40	43	13		7.0 × 6.5 × 2.8
Takasago	20	30	24	40	43	13		7.0 × 6.5 × 2.8
Cheerio	8	—	—	—	25	8		6.4 × 3.8 × 2.6

2F

■ Castle Terrace



■ Ariake



Room Name	Capacity (persons)				Area		W x L x H	
	Formal Dinner	Standing Buffet	Classroom Style	Theater Style	m <sup>2</sup>	Tsubo	m	
Castle Terrace	All	60	80	100	140	135	40	21.0 × 6.5 × 2.8
	East	40	50	50	70	95	28	15.0 × 6.5 × 2.8
	West	20	30	24	40	40	12	6.0 × 6.5 × 2.8
Ariake	40	50	50	70	83	25		11.8 × 7.0 × 2.8

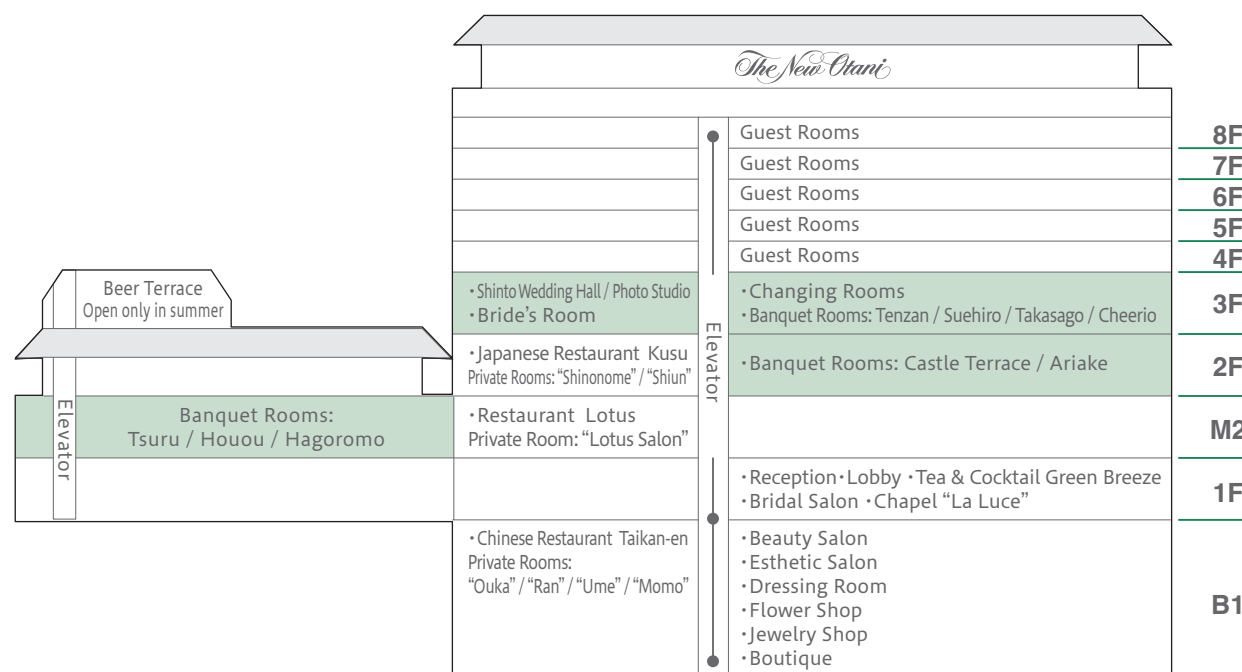
\*Please contact us for details and availability.



# Floor Map

## Floor Map

A hotel surrounded by a historic moat that glistens in the sunlight.  
Have a relaxing stay in a refined and fully-equipped space nestled in nature.



Park View  
(Moat Side)



### 8F

- SD: Semi-Double Room
- DB: Double Room
- TB: Twin Room
- Royal Suite Room

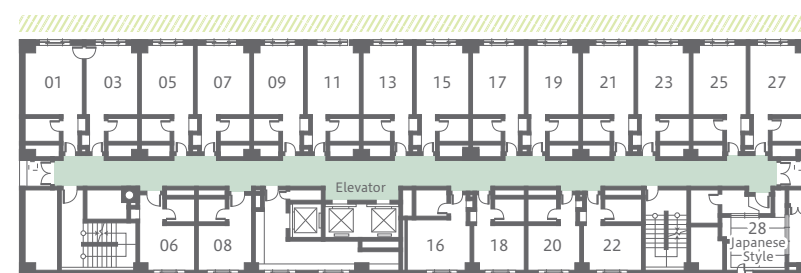
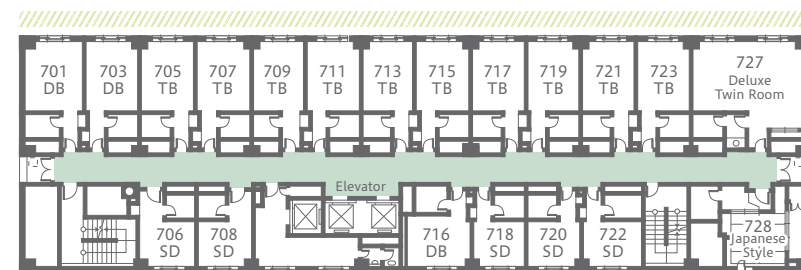
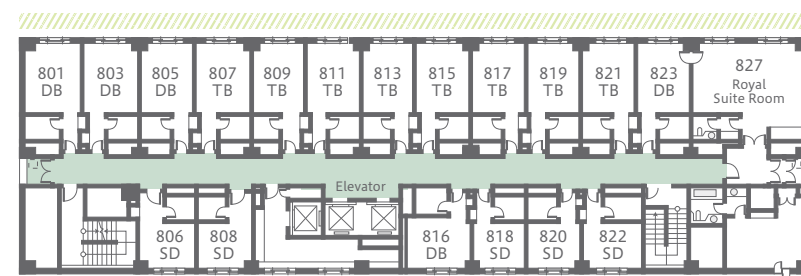
### 7F

- SD: Semi-Double Room
- DB: Double Room
- TB: Twin Room
- 728 Japanese Style
- Deluxe Twin Room

### 4F~6F

- 401·403 / 501·503 Connecting Rooms
- 601·627 Double Rooms
- 411 Ladies' Room & Bride's Room
- 428·528·628 Japanese Style Rooms

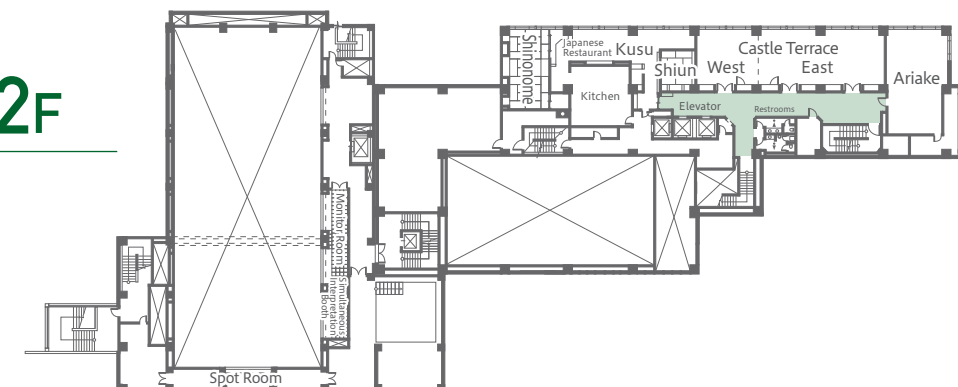
City View



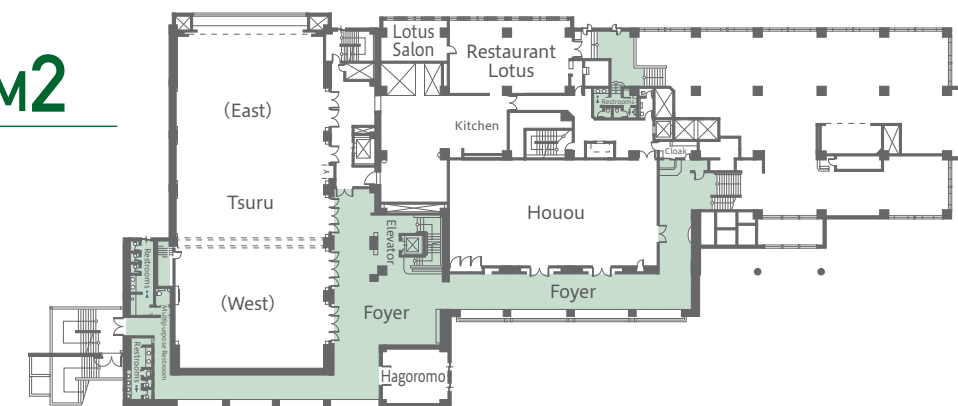
### 3F



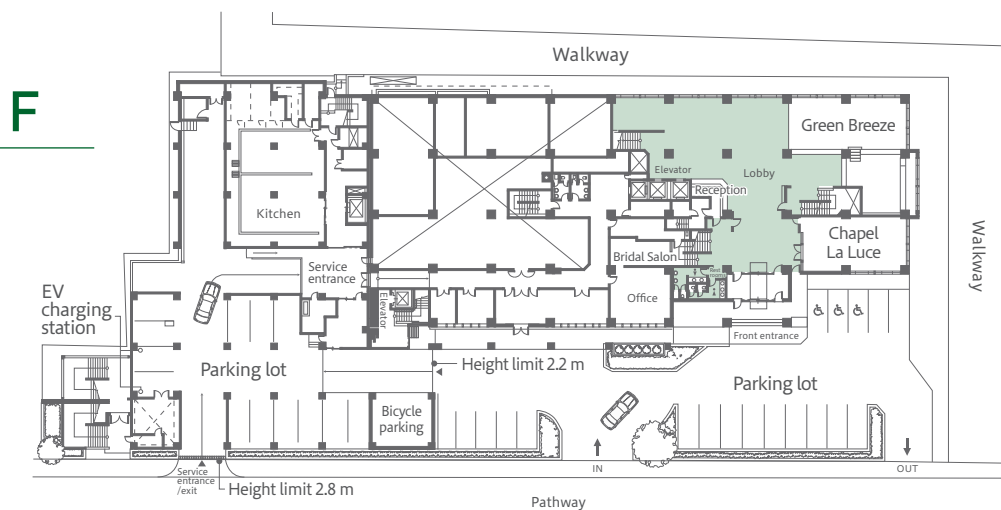
### 2F



### M2



### 1F



### B1

